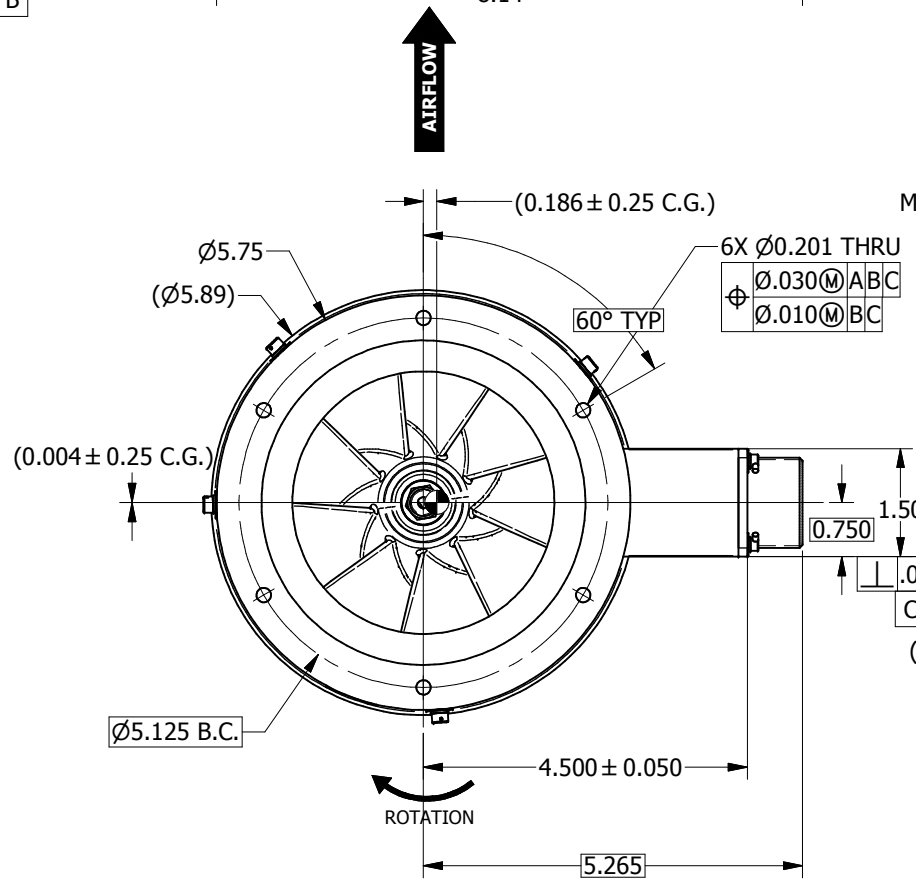
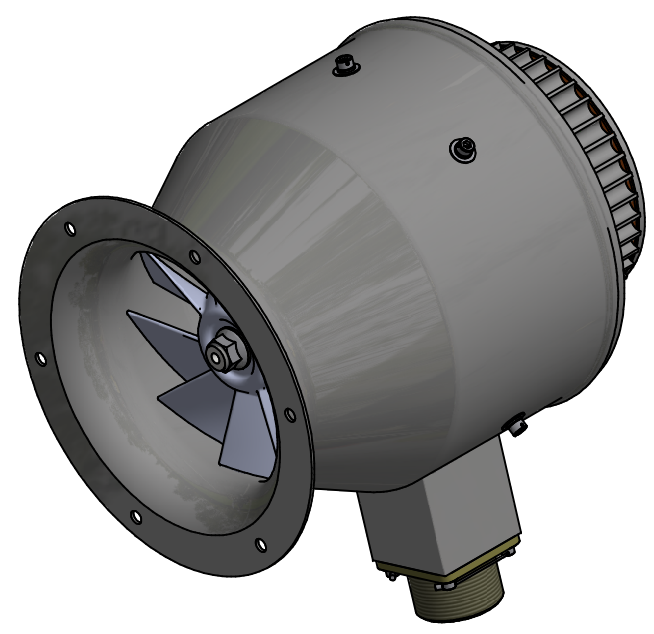
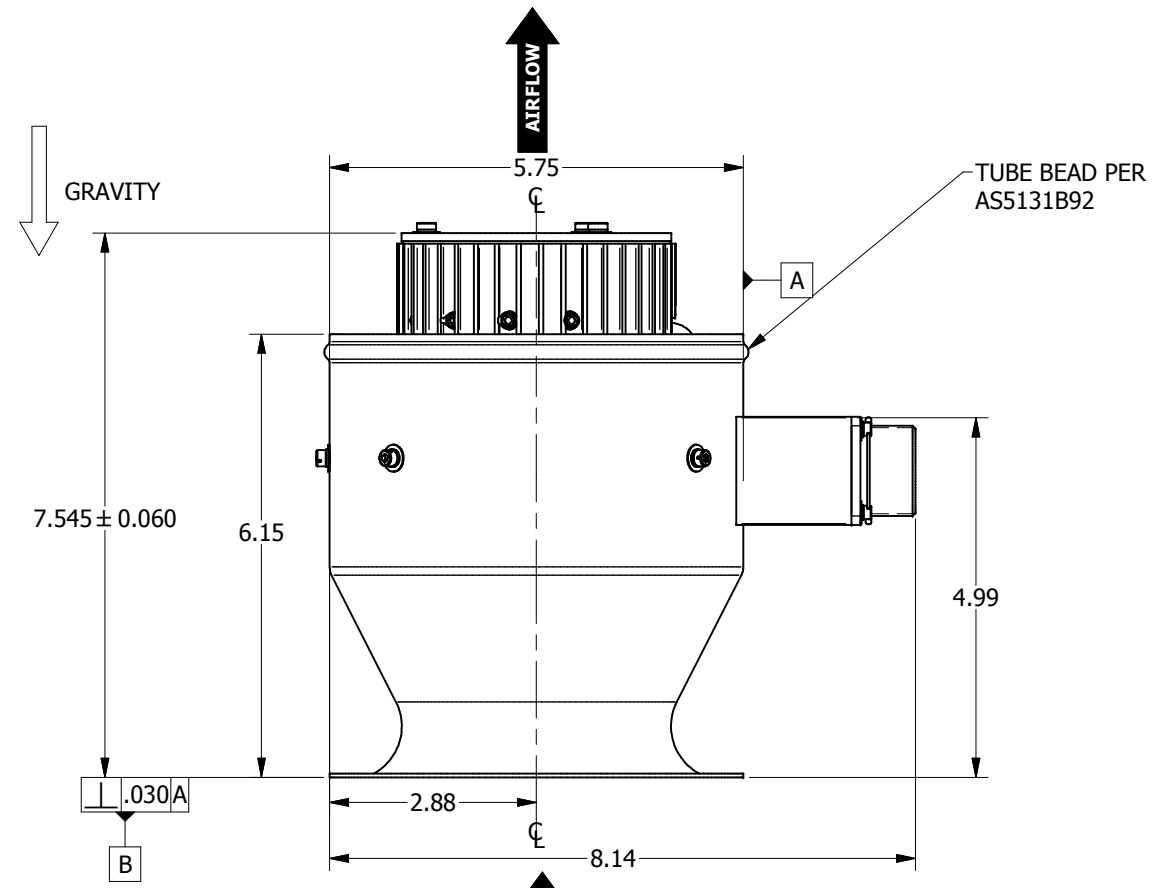
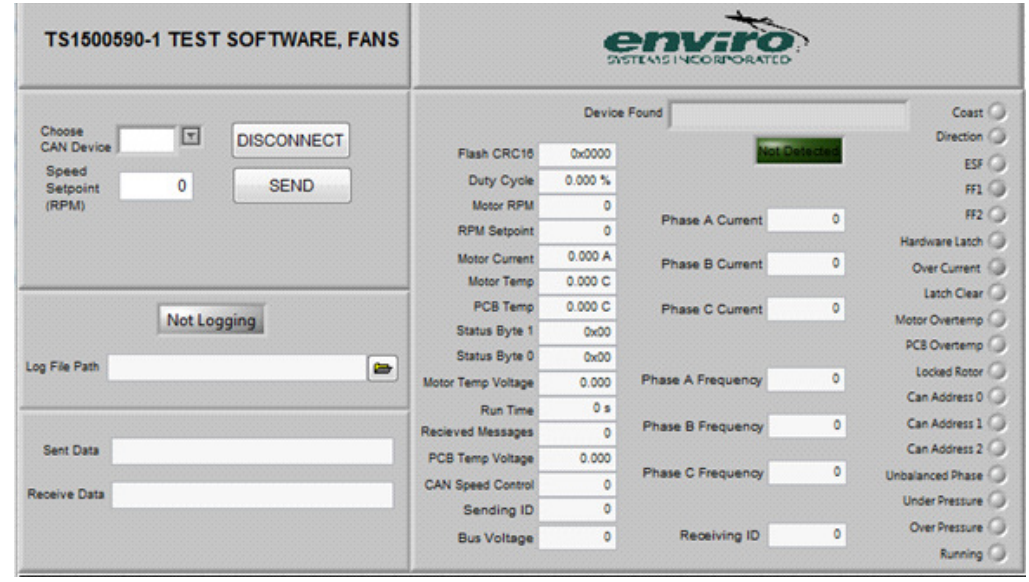
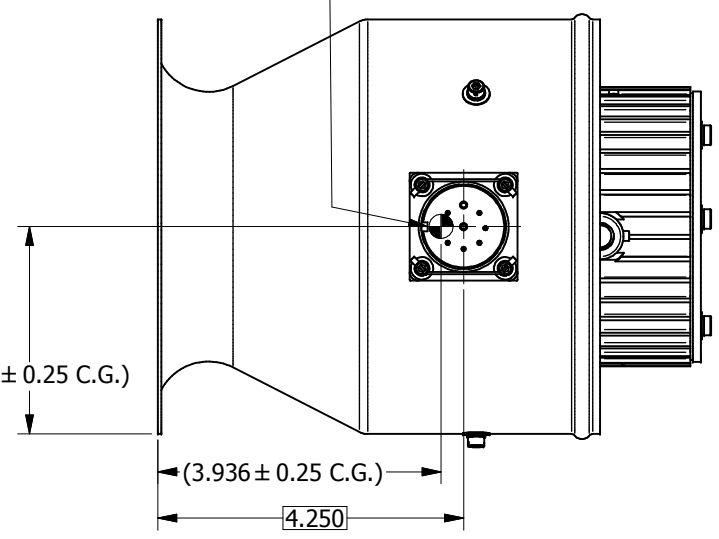


DESIGN SPECIFICATIONS	
AIRFLOW (HIGH SPEED)	500 ACFM
STATIC PRESSURE (HIGH SPEED)	3.5" W.G. EXTERNAL TO FAN
PRESSURE	14.696 PSIA [1.01325 BAR]
TEMPERATURE	68 °F [20 °C]
VOLTAGE	28.0 VDC (NOM.)
HIGH SPEED	12,550 RPM
HIGH SPEED CURRENT	21 AMPS (MAX.)
WEIGHT	5.25 LBS (MAX.) [2.72 KG (MAX.)]
OPERATING TEMPERATURE	-40°F TO 185°F [-40°C TO 85°C]
SHORT TIME OPERATION AND ALTITUDE	-67°F TO 212°F [-55°C TO 100°C]
	-1K TO 15K FT



MASTER KEY FOR
FAN CONNECTION RECEPTACLE
MS3452W20-16P
MATES WITH PN: MS3459W20-16S
Ø.250 M ABC



PROPRIETARY NOTICE
THIS DRAWING IS A PART OF THE PROPRIETARY ARTICLE HEREIN DISCLOSED, AND ALL DESIGN, MANUFACTURING, REPRODUCTION, USE, PATENT RIGHTS AND SALES RIGHTS REGARDING THE SAME ARE EXPRESSLY RESERVED BY ENVIRO SYSTEMS, INC. IT IS SUBMITTED UNDER A CONFIDENTIAL RELATIONSHIP FOR A SPECIFIC PURPOSE AND SHALL NOT BE DISCLOSED TO ANY UNAUTHORIZED PERSON, COMPANY, OR INCORPORATED IN ANY OTHER PROJECTS.

ENVIRO SYSTEMS, INC.
SEMINOLE, OKLAHOMA

FAN, MIXED FLOW, CABIN EVAP., 5.65 INCH

SIZE: D 0B9E8 CAGE CODE: 1270560-CAT DRAWING NO.: 1270560-CAT REV.: A SCALE: 1/2 WEIGHT: NOTED SHEET 1 OF 1