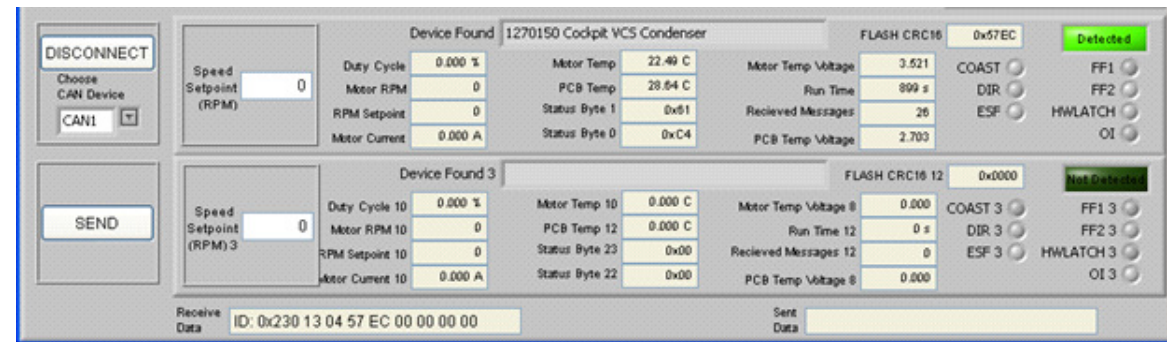
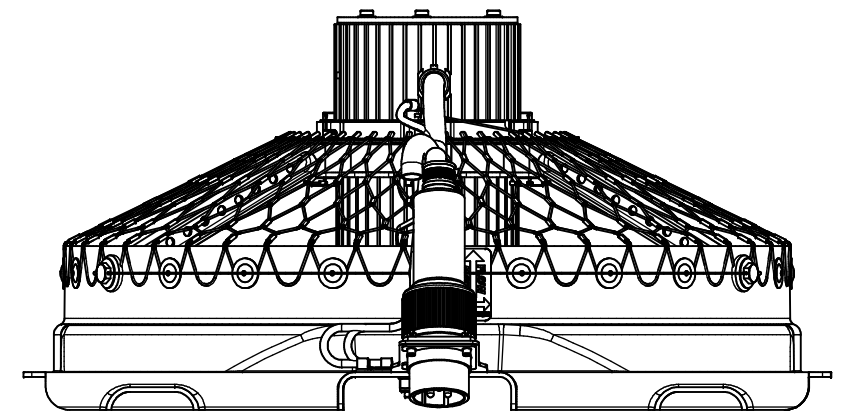
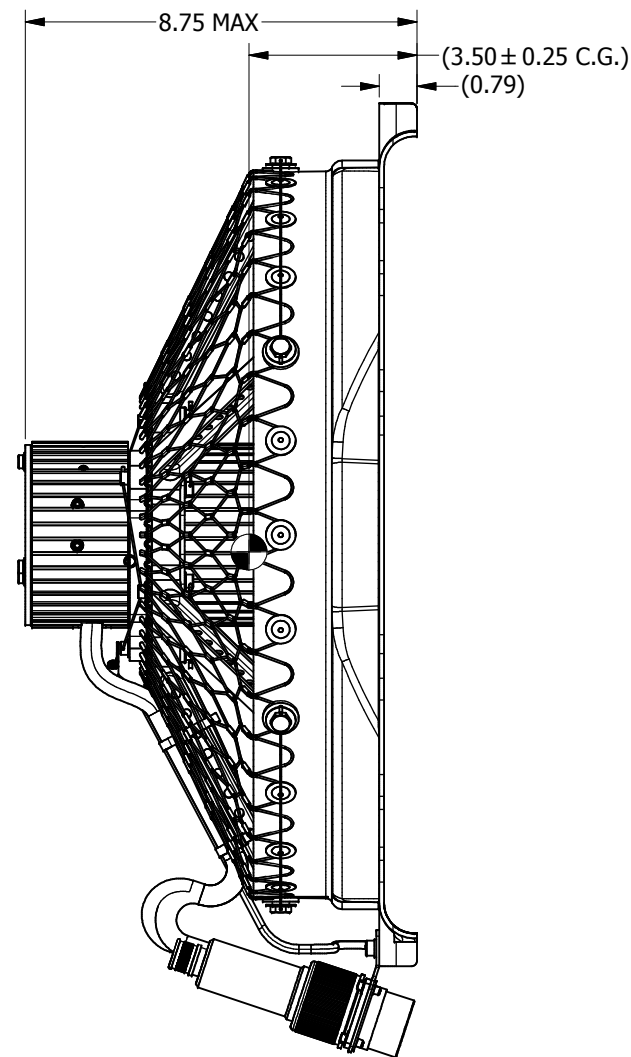
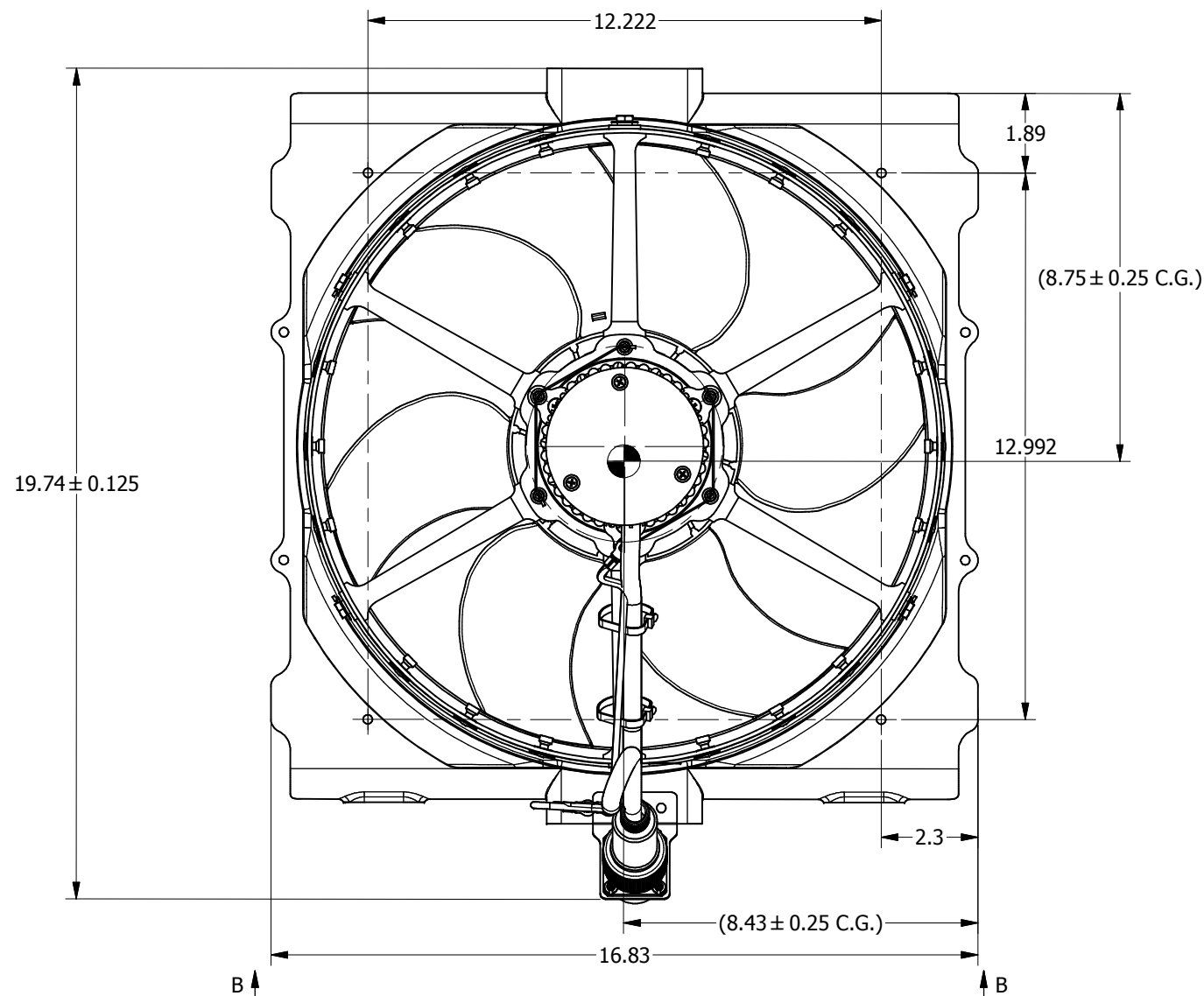
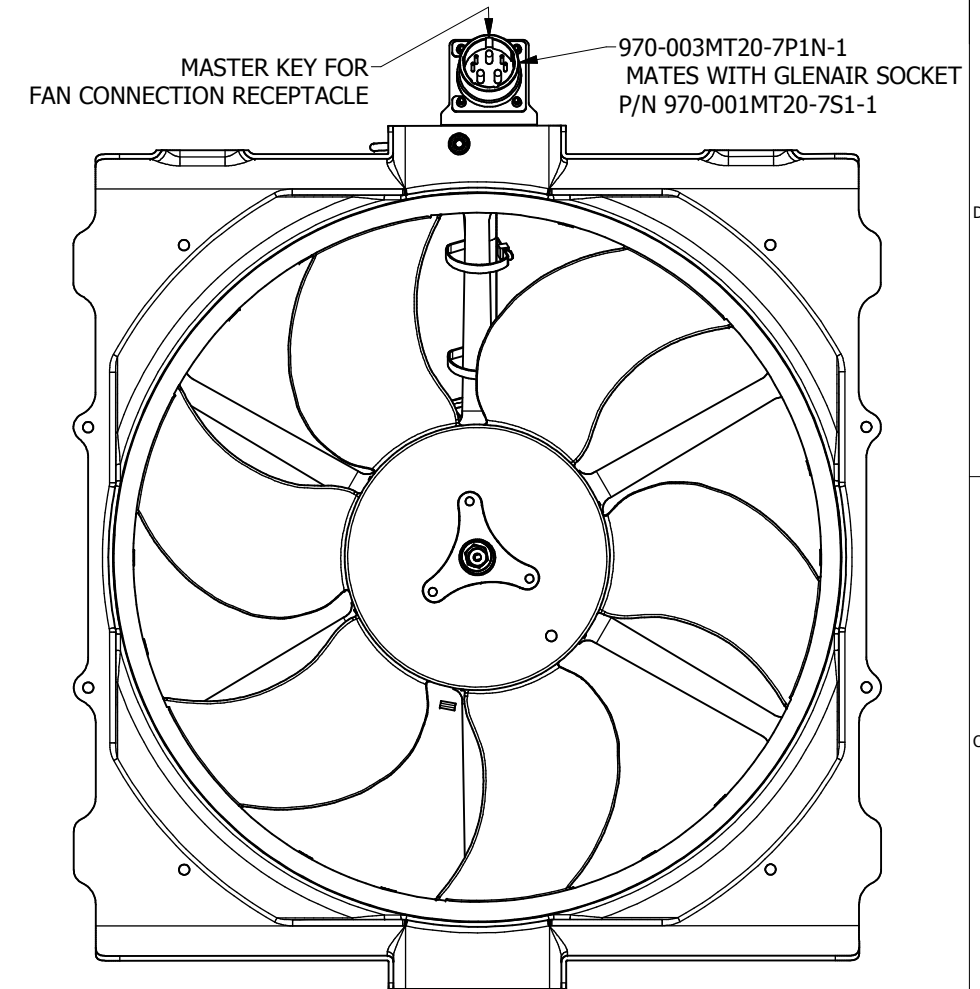


DESIGN SPECIFICATIONS	
AIRFLOW (HIGH SPEED)	1300 ACFM
STATIC PRESSURE (HIGH SPEED)	1.5" W.G. EXTERNAL TO FAN
PRESSURE	14.696 PSIA [1.01325 BAR]
TEMPERATURE	68 °F [20 °C]
VOLTAGE	28.0 VDC (NOM.)
HIGH SPEED	3750 RPM
HIGH SPEED CURRENT	30 AMPS (MAX.)
WEIGHT	11.0 LBS (MAX.) [4.990 KG]
OPERATING TEMPERATURE	-40°F TO 185°F [-40°C TO 85°C]
SHORT TIME OPERATION AND STORAGE	-67°F TO 212°F [-55°C TO 100°C]
ALTITUDE	-1K TO 25K FT



FAN DIAGNOSTIC SOFTWARE



PROPRIETARY NOTICE
THIS DRAWING IS A PART OF THE PROPRIETARY ARTICLE HEREIN DISCLOSED, AND ALL DESIGN, MANUFACTURING, REPRODUCTION, USE, PATENT RIGHTS AND SALES RIGHTS REGARDING THE SAME ARE EXPRESSLY RESERVED BY ENVIRO SYSTEMS, INC. IT IS SUBMITTED UNDER A CONFIDENTIAL RELATIONSHIP FOR A SPECIFIC PURPOSE AND SHALL NOT BE DISCLOSED TO ANY UNAUTHORIZED PERSON, COMPANY, OR INCORPORATED IN ANY OTHER PROJECTS.

ENVIRO SYSTEMS, INC.
SEMINOLE, OKLAHOMA

TITLE
FAN, AXIAL, 15 INCH

SIZE: D 0B9E8 CAGE CODE: 1270150-CAT DRAWING NO.: - REV.: - SCALE: 1/2 WEIGHT: SEE SCD SHEET 1 OF 1