

DESIGN SPECIFICATIONS

CAPACITY _____ 10,000 BTUH

AIR INLET _____ 74°F D.B. & 62°F W.B.

AIRFLOW _____ 300 CFM AT MAX. S.P.

STATIC PRESS. _____ 2.0" W.G. (MAX. EXTERNAL)

EVAPORATING TEMP. _____ 42°F (REFRIGERANT)

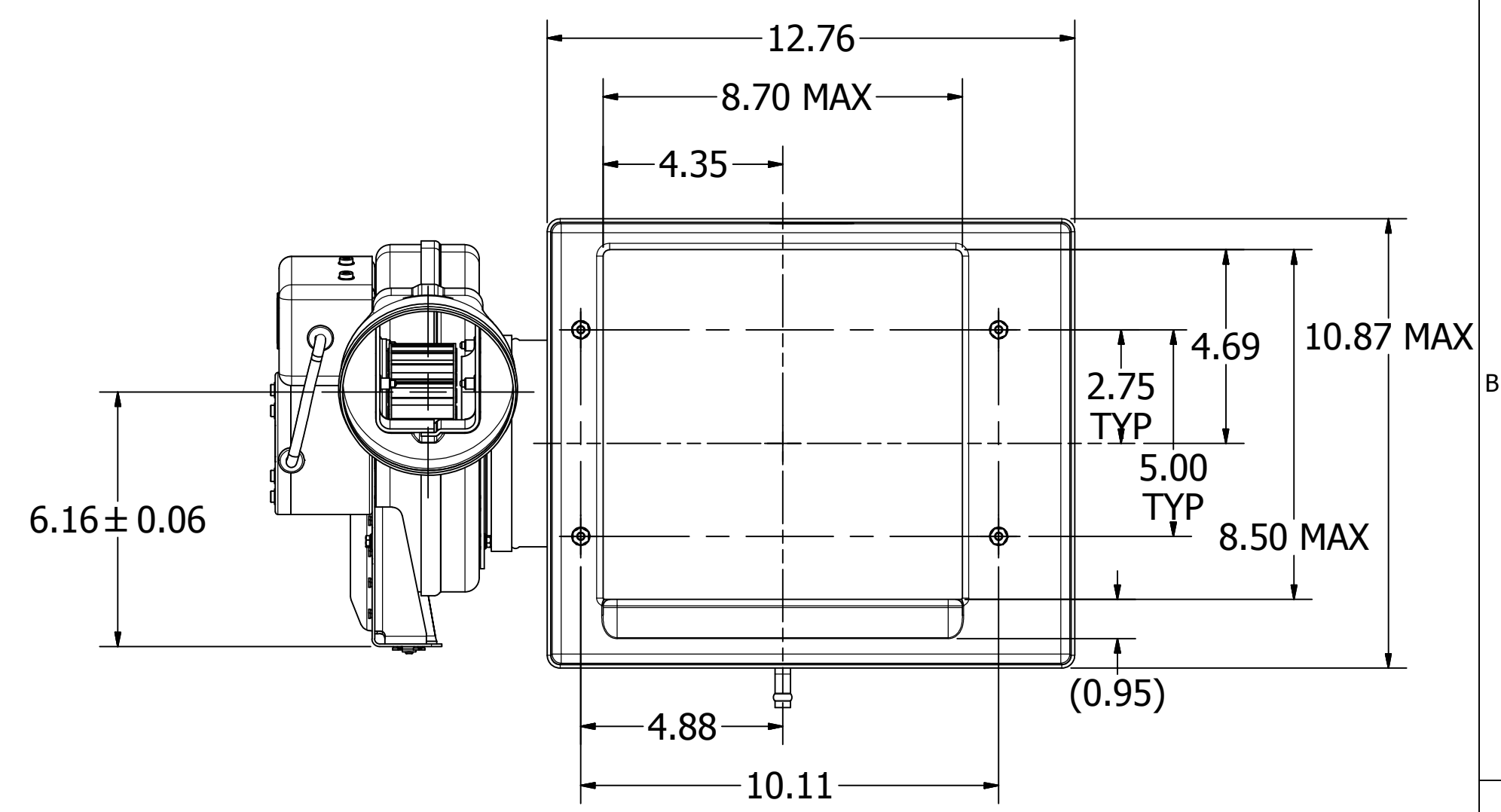
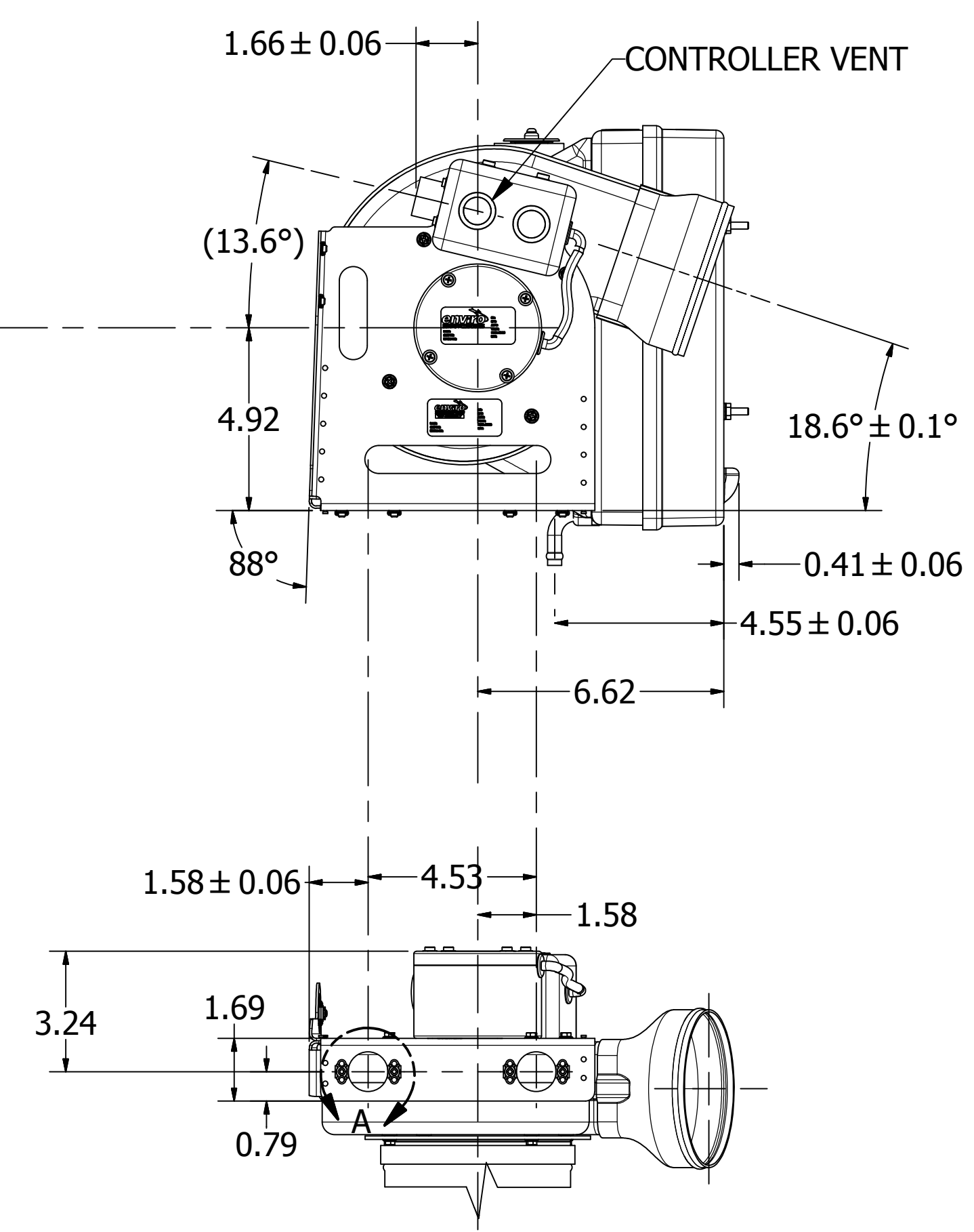
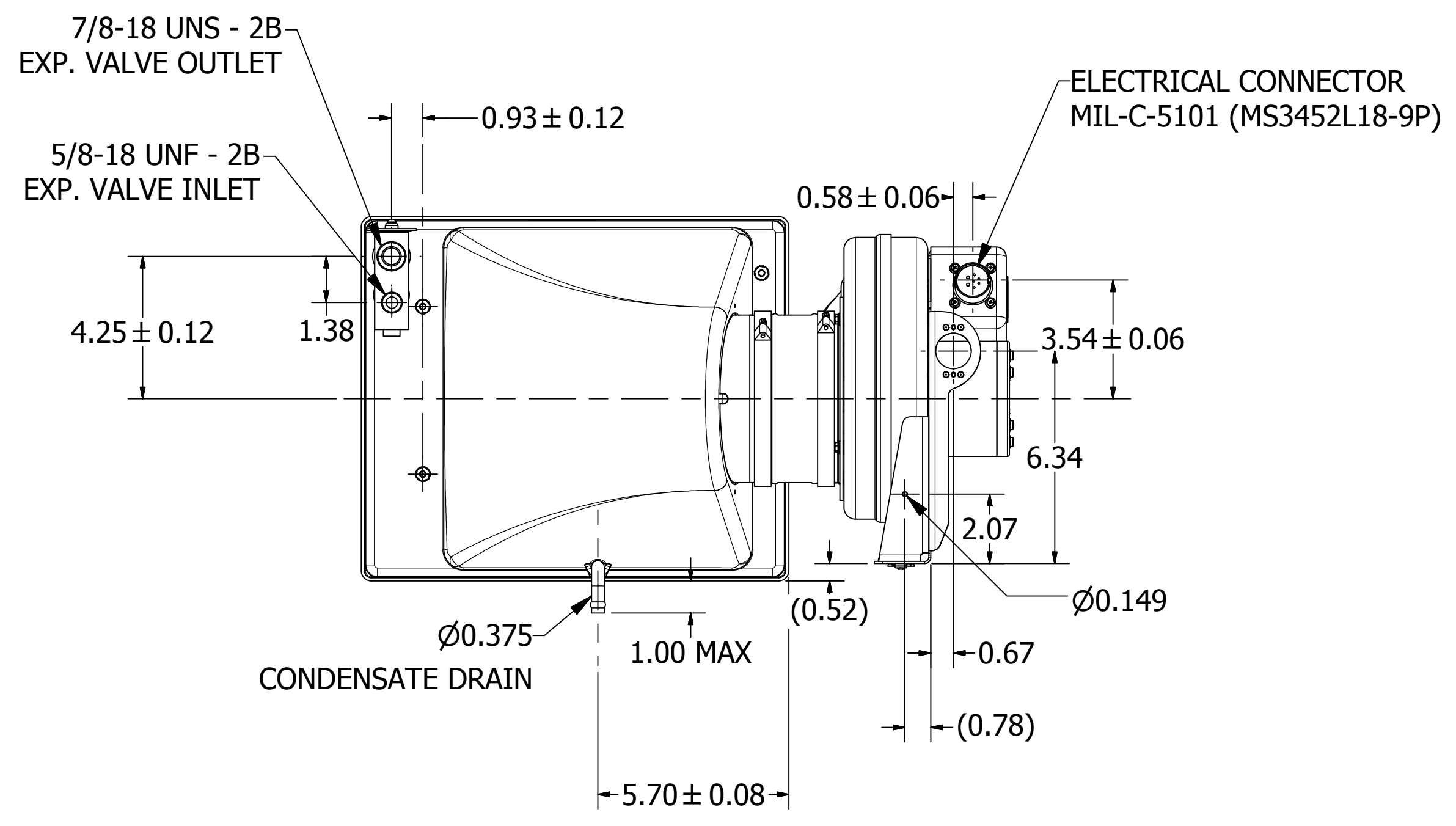
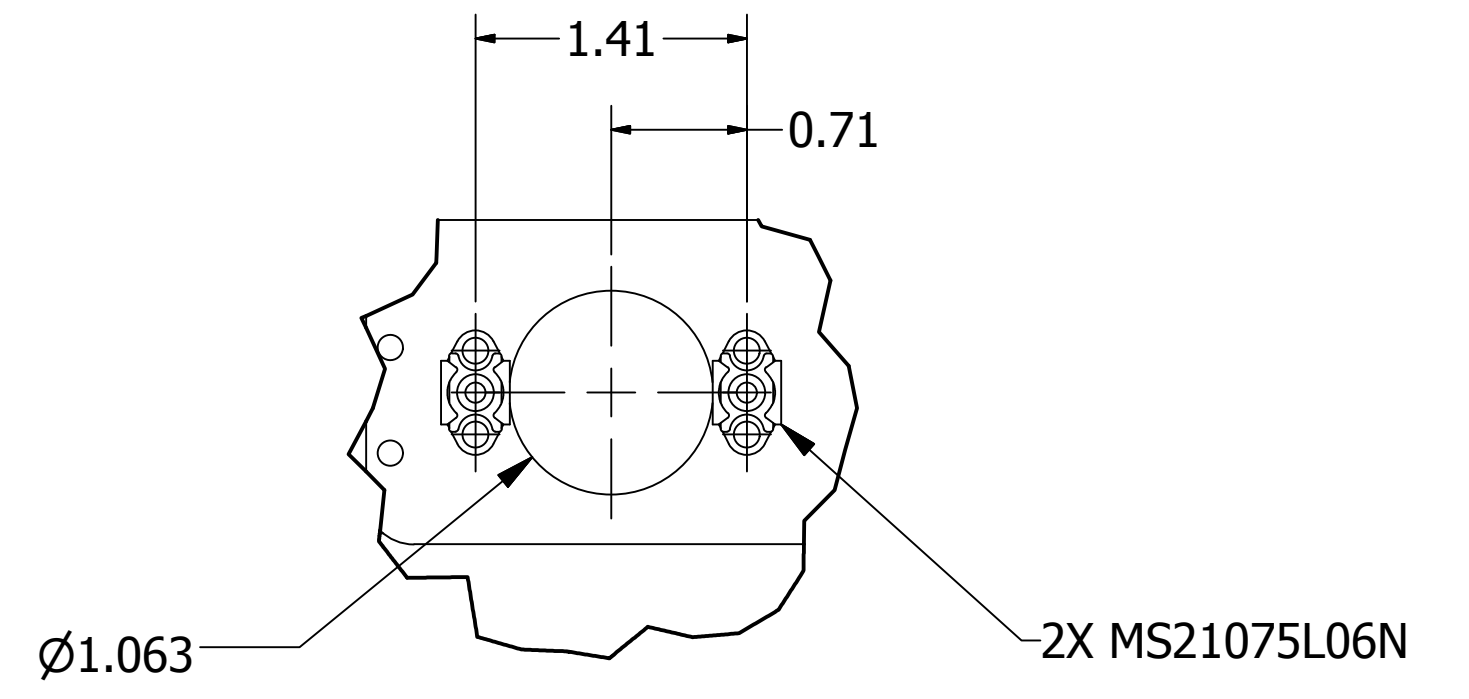
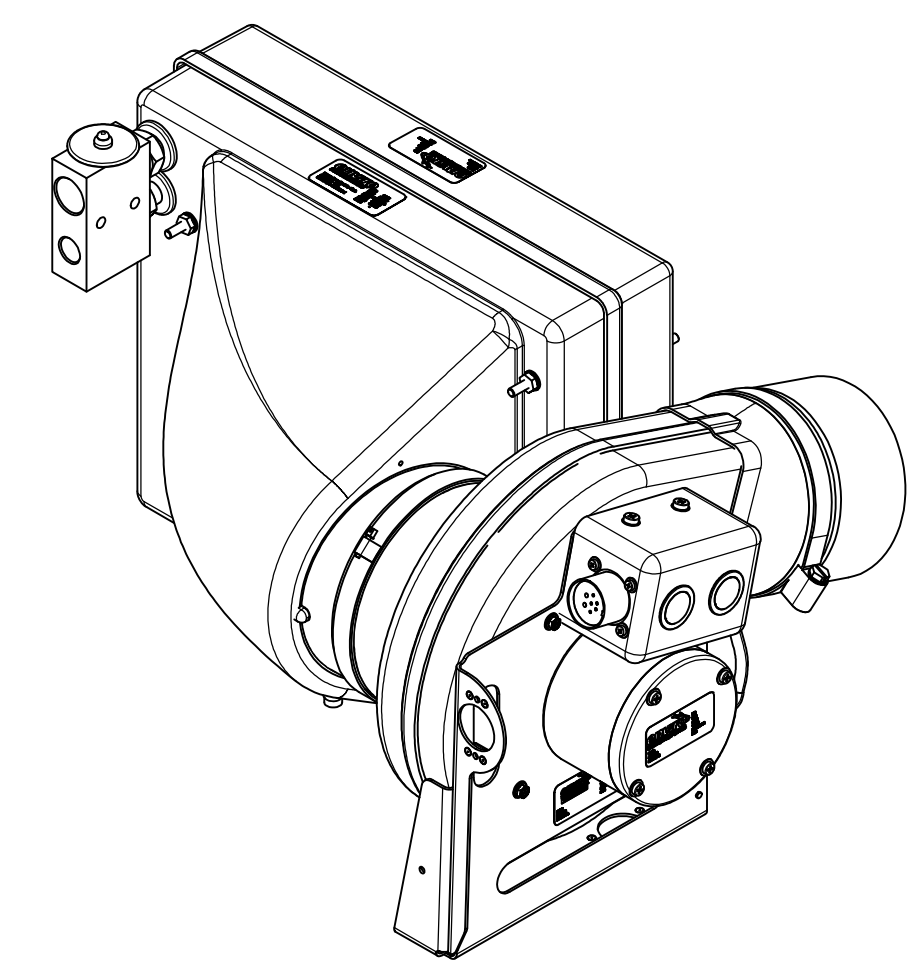
FAN TYPE _____ CENTRIFUGAL, FWD. CURVED

MOTOR TYPE _____ 3 SPEED, BLDC

VOLTAGE _____ 28 VDC

CURRENT _____ 16 AMPS (MAX.)

WEIGHT _____ 13.25 LBS. (EST.)



<p>PROPRIETARY NOTICE THIS DRAWING IS A PART OF THE PROPRIETARY ARTICLE HEREIN DISCLOSED, AND ALL DESIGN, MANUFACTURING, REPRODUCTION, USE, PATENT RIGHTS AND SALES RIGHTS REGARDING THE SAME ARE EXPRESSLY RESERVED BY ENVIRO SYSTEMS, INC. IT IS SUBMITTED UNDER A CONFIDENTIAL RELATIONSHIP FOR A SPECIFIC PURPOSE AND SHALL NOT BE DISCLOSED TO ANY UNAUTHORIZED PERSON, COMPANY, OR INCORPORATED IN ANY OTHER PROJECTS.</p>		<p>ENVIRO SYSTEMS, INC. SEMINOLE, OKLAHOMA</p>	
<p>EVAPORATOR MODULE, COCKPIT</p>		<p>SIZE: D 0B9E8</p>	<p>CAGE CODE: 1133850-CAT 2</p>
<p>SCALE:</p>	<p>WEIGHT:</p>	<p>DRAWING NO. 1133850-CAT 2</p>	<p>REV. SHEET 1 OF 1</p>